

# PPP4R3B Rabbit Polyclonal Antibody



CAB17189

## Product Information

### Size:

20uL, 50uL, 100uL, 200uL

### Observed MW:

97kDa

### Calculated MW:

6kDa/31kDa/87kDa/93kDa/97kDa

### Applications:

WB IF

### Reactivity:

Human, Mouse, Rat

## Antibody Information

### Recommended dilutions:

WB 1:500 - 1:2000 IF 1:50 - 1:200

### Source:

Rabbit

### Isotype:

IgG

### Purification:

Affinity purification

## Protein Background

### Immunogen information

#### Gene ID:

57223

#### Uniprot

Q5MIZ7

#### Synonyms:

PPP4R3B; FLFL2; PP4R3B; PSY2; SMEK2; smk1

#### Immunogen:

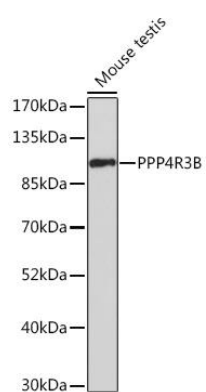
Recombinant fusion protein containing a sequence corresponding to amino acids 628-817 of human PPP4R3B (NP\_001269779.1).

#### Storage:

Store at -20°C. Avoid freeze / thaw cycles. Buffer: PBS with 0.02% sodium azide, 50% glycerol, pH7.3.

## Product Images

---



Western blot - PPP4R3B Rabbit pAb (CAB17189)