

CLSPN Rabbit Polyclonal Antibody



CAB17202

Product Information

Size:

20uL, 50uL, 100uL, 200uL

Observed MW:

275kDa

Calculated MW:

151kDa

Applications:

WB

Reactivity:

Human

Protein Background

The product of this gene is an essential upstream regulator of checkpoint kinase 1 and triggers a checkpoint arrest of the cell cycle in response to replicative stress or DNA damage. The protein is also required for efficient DNA replication during a normal S phase. Multiple transcript variants encoding different isoforms have been found for this gene.

Immunogen information

Gene ID:

63967

Uniprot

Q9HAW4

Synonyms:

CLSPN; claspin

Antibody Information

Recommended dilutions:

WB 1:500 - 1:2000

Source:

Rabbit

Isotype:

IgG

Purification:

Affinity purification

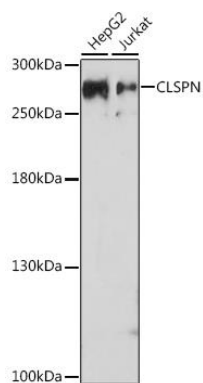
Immunogen:

A synthetic peptide corresponding to a sequence within amino acids 650-750 of human CLSPN (NP_001177410.1).

Storage:

Store at -20°C. Avoid freeze / thaw cycles. Buffer: PBS with 0.02% sodium azide, 50% glycerol, pH7.3.

Product Images



Western blot - CLSPN Polyclonal Antibody (CAB17202)