

FAT4 Rabbit Polyclonal Antibody



CAB17212

Product Information

Size:

20uL, 50uL, 100uL, 200uL

Observed MW:

460kDa

Calculated MW:

Applications:

WB IF

Reactivity:

Human, Mouse, Rat

Antibody Information

Recommended dilutions:

WB 1:500 - 1:2000 IF 1:50 - 1:200

Source:

Rabbit

Isotype:

IgG

Purification:

Affinity purification

Protein Background

The protein encoded by this gene is a member of the protocadherin family. This gene may play a role in regulating planar cell polarity (PCP). Studies in mice suggest that loss of PCP signaling may cause cystic kidney disease, and mutations in this gene have been associated with Van Maldergem Syndrome 2. Alternatively spliced transcript variants have been noted for this gene.

Immunogen information

Gene ID:

79633

Uniprot

Q6V0I7

Synonyms:

FAT4; CDHF14; CDHR11; FAT-J; FATJ; HKLLS2; NBLA00548; VMLDS2

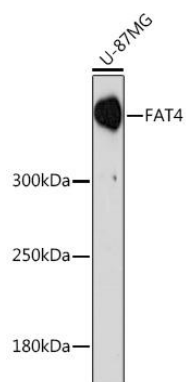
Immunogen:

A synthetic peptide of human FAT4.

Storage:

Store at -20°C. Avoid freeze / thaw cycles. Buffer: PBS with 0.02% sodium azide, 50% glycerol, pH7.3.

Product Images



Western blot - FAT4 Rabbit pAb (CAB17212)