

# CYBRD1 Rabbit Polyclonal Antibody



CAB17215

---

## Product Information

### Size:

20uL, 50uL, 100uL, 200uL

### Observed MW:

36kDa

### Calculated MW:

### Applications:

WB

### Reactivity:

Human

## Protein Background

This gene is a member of the cytochrome b(561) family that encodes an iron-regulated protein. It highly expressed in the duodenal brush border membrane. It has ferric reductase activity and is believed to play a physiological role in dietary iron absorption.

## Immunogen information

### Gene ID:

79901

### Uniprot

Q53TN4

### Synonyms:

CYBRD1; CYB561A2; CYBRD1

## Antibody Information

### Recommended dilutions:

WB 1:500 - 1:2000

### Source:

Rabbit

### Isotype:

IgG

### Purification:

Affinity purification

### Immunogen:

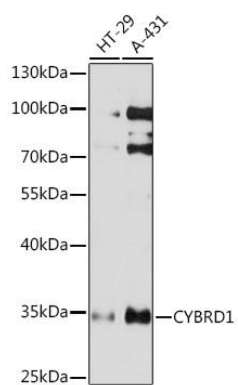
Recombinant fusion protein containing a sequence corresponding to amino acids 215-286 of human CYBRD1 (NP\_079119.3).

### Storage:

Store at -20°C. Avoid freeze / thaw cycles. Buffer: PBS with 0.02% sodium azide, 50% glycerol, pH7.3.

## Product Images

---



Western blot - CYBRD1 Rabbit pAb (CAB17215)