

TAS1R2 Rabbit Polyclonal Antibody



CAB17218

Product Information

Size:

20uL, 50uL, 100uL, 200uL

Observed MW:

95kDa

Calculated MW:

Applications:

WB

Reactivity:

Human

Antibody Information

Recommended dilutions:

WB 1:500 - 1:2000

Source:

Rabbit

Isotype:

IgG

Purification:

Affinity purification

Protein Background

Immunogen information

Gene ID:

80834

Uniprot

Q8TE23

Synonyms:

TAS1R2; GPR71; T1R2; TR2

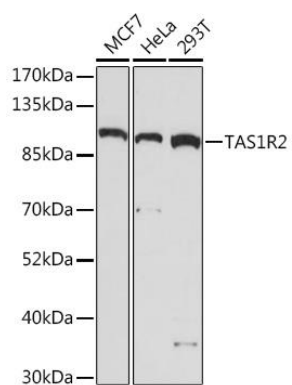
Immunogen:

A synthetic peptide corresponding to a sequence within amino acids 450-550 of human TAS1R2 (NP_689418.2).

Storage:

Store at -20°C. Avoid freeze / thaw cycles. Buffer: PBS with 0.02% sodium azide, 50% glycerol, pH7.3.

Product Images



Western blot - TAS1R2 Rabbit pAb (CAB17218)