

MAML2 Rabbit Polyclonal Antibody



CAB17225

Product Information

Size:

20uL, 50uL, 100uL, 200uL

Observed MW:

150kDa

Calculated MW:

Applications:

WB IF

Reactivity:

Human, Mouse, Rat

Antibody Information

Recommended dilutions:

WB 1:500 - 1:2000 IF 1:50 - 1:200

Source:

Rabbit

Isotype:

IgG

Purification:

Affinity purification

Protein Background

The protein encoded by this gene is a member of the Mastermind-like family of proteins. All family members are proline and glutamine-rich, and contain a conserved basic domain that binds the ankyrin repeat domain of the intracellular domain of the Notch receptors (ICN1-4) in their N-terminus, and a transcriptional activation domain in their C-terminus. This protein binds to an extended groove that is formed by the interaction of CBF1, Suppressor of Hairless, LAG-1 (CSL) with ICN, and positively regulates Notch signaling. High levels of expression of this gene have been observed in several B cell-derived lymphomas. Translocations resulting in fusion proteins with both CRTC1 and CRTC3 have been implicated in the development of mucoepidermoid carcinomas, while a translocation event with CXCR4 has been linked with chronic lymphocytic leukemia (CLL). Copy number variation in the polyglutamine tract has been observed.

Immunogen information

Gene ID:

84441

Uniprot

Q8IZL2

Synonyms:

MAML2; MAM-3; MAM2; MAM3; MLL-MAML2

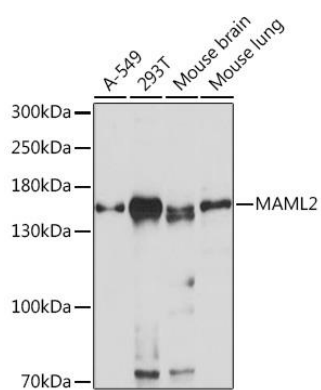
Immunogen:

A synthetic peptide corresponding to a sequence within amino acids 750-850 of human MAML2 (NP_115803.1).

Storage:

Store at -20°C. Avoid freeze / thaw cycles. Buffer: PBS with 0.02% sodium azide, 50% glycerol, pH7.3.

Product Images



Western blot - MAML2 Rabbit pAb (CAB17225)