

# PPP1R9B Rabbit Polyclonal Antibody



CAB17230

---

## Product Information

### Size:

20uL, 50uL, 100uL, 200uL

### Observed MW:

127kDa

### Calculated MW:

89kDa

### Applications:

WB IF

### Reactivity:

Human, Mouse

## Protein Background

This gene encodes a scaffold protein that functions as a regulatory subunit of protein phosphatase 1a. Expression of this gene is particularly high in dendritic spines, suggesting that the encoded protein may play a role in receiving signals from the central nervous system. The encoded protein has putative tumor suppressor function and decreased expression has been observed in tumors.

## Immunogen information

### Gene ID:

84687

### Uniprot

Q96SB3

### Synonyms:

PPP1R9B; PPP1R6; PPP1R9; SPINO; Spn

## Antibody Information

### Recommended dilutions:

WB 1:500 - 1:2000 IF 1:50 - 1:200

### Source:

Rabbit

### Isotype:

IgG

### Purification:

Affinity purification

### Immunogen:

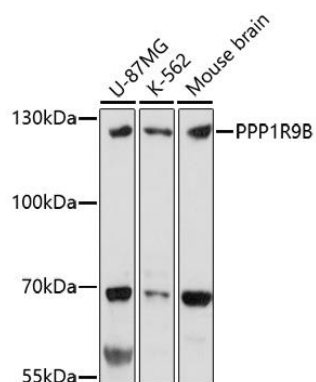
A synthetic peptide of human PPP1R9B.

### Storage:

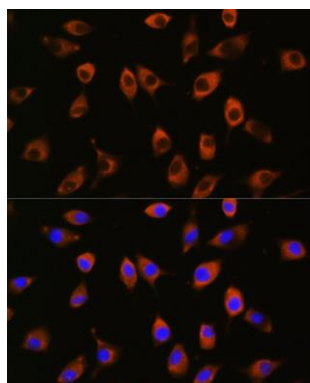
Store at -20°C. Avoid freeze / thaw cycles. Buffer: PBS with 0.02% sodium azide, 50% glycerol, pH7.3.

## Product Images

---



Western blot analysis of extracts of various cell lines, using PPP1R9B antibody (CAB17230) at 1:1000 dilution. Secondary antibody: HRP Goat Anti-Rabbit IgG (H+L) (CABS014) at 1:10000 dilution. Lysates/proteins: 25ug per lane. Blocking buffer: 3% nonfat dry milk in TBST. Detection: ECL Basic Kit (CABM00020). Exposure time: 3min.



Immunofluorescence analysis of L929 cells using PPP1R9B antibody (CAB17230) at dilution of 1:100. Blue: DAPI for nuclear staining.