

ZCCHC3 Rabbit Polyclonal Antibody



CAB17235

Product Information

Size:

20uL, 50uL, 100uL, 200uL

Observed MW:

43kDa

Calculated MW:

43kDa

Applications:

WB IF

Reactivity:

Human, Mouse

Antibody Information

Recommended dilutions:

WB 1:500 - 1:2000 IF 1:50 - 1:200

Source:

Rabbit

Isotype:

IgG

Purification:

Affinity purification

Protein Background

Immunogen information

Gene ID:

85364

Uniprot

Q9NUD5

Synonyms:

ZCCHC3; C20orf99

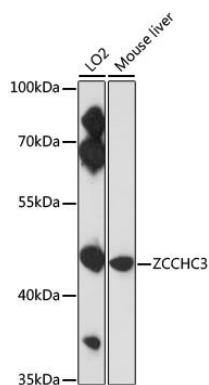
Immunogen:

Recombinant fusion protein containing a sequence corresponding to amino acids 215-335 of human ZCCHC3 (NP_149080.2).

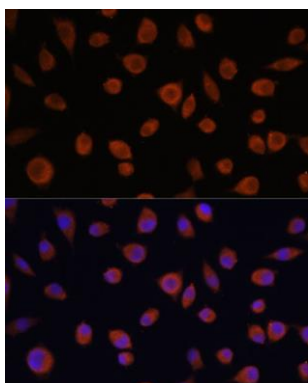
Storage:

Store at -20°C. Avoid freeze / thaw cycles. Buffer: PBS with 0.02% sodium azide, 50% glycerol, pH7.3.

Product Images



Western blot analysis of extracts of various cell lines, using ZCCHC3 antibody (CAB17235) at 1:3000 dilution. Secondary antibody: HRP Goat Anti-Rabbit IgG (H+L) (CABS014) at 1:10000 dilution. Lysates/proteins: 25ug per lane. Blocking buffer: 3% nonfat dry milk in TBST. Detection: ECL Enhanced Kit (CABM00021). Exposure time: 30s.



Immunofluorescence analysis of L929 cells using ZCCHC3 antibody (CAB17235) at dilution of 1:100. Blue: DAPI for nuclear staining.