

CERS5 Rabbit Polyclonal Antibody



CAB17239

Product Information

Size:

20uL, 50uL, 100uL, 200uL

Observed MW:

Refer to figures

Calculated MW:

Applications:

WB

Reactivity:

Mouse, Rat

Protein Background

This gene encodes a protein that belongs to the TLC (TRAM, LAG1 and CLN8 homology domains) family of proteins. The encoded protein functions in the synthesis of ceramide, a lipid molecule that is involved in a several cellular signaling pathways. Alternate splicing results in multiple transcript variants.

Immunogen information

Gene ID:

91012

Uniprot

Q8N5B7

Synonyms:

CERS5; LASS5; Trh4

Antibody Information

Recommended dilutions:

WB 1:500 - 1:2000

Source:

Rabbit

Isotype:

IgG

Purification:

Affinity purification

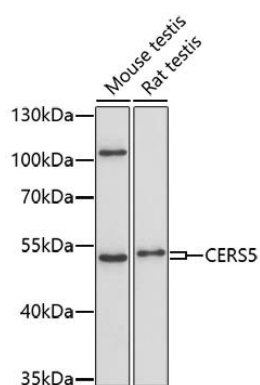
Immunogen:

A synthetic peptide corresponding to a sequence within amino acids 1-100 of human CERS5 (NP_001268660.1).

Storage:

Store at -20°C. Avoid freeze / thaw cycles. Buffer: PBS with 0.02% sodium azide, 50% glycerol, pH7.3.

Product Images



Western blot analysis of extracts of various cell lines, using CERS5 antibody (CAB17239) at 1:1000 dilution. Secondary antibody: HRP Goat Anti-Rabbit IgG (H+L) (CABS014) at 1:10000 dilution. Lysates/proteins: 25ug per lane. Blocking buffer: 3% nonfat dry milk in TBST. Detection: ECL Basic Kit (CABM00020). Exposure time: 90s.