

GORAB Rabbit Polyclonal Antibody



CAB17245

Product Information

Size:

20uL, 50uL, 100uL, 200uL

Observed MW:

55kDa

Calculated MW:

21kDa/24kDa/27kDa/44kDa

Applications:

WB

Reactivity:

Human, Mouse

Protein Background

This gene encodes a member of the golgin family, a group of coiled-coil proteins localized to the Golgi. The encoded protein may function in the secretory pathway. The encoded protein, which also localizes to the cytoplasm, was identified by interactions with the N-terminal kinase-like protein, and thus it may function in mitosis. Mutations in this gene have been associated with geroderma osteodysplastica. Alternatively spliced transcript variants have been described.

Immunogen information

Gene ID:

92344

Uniprot

Q5T7V8

Synonyms:

GORAB; GO; NTKLBP1; SCYL1BP1

Antibody Information

Recommended dilutions:

WB 1:500 - 1:2000

Source:

Rabbit

Isotype:

IgG

Purification:

Affinity purification

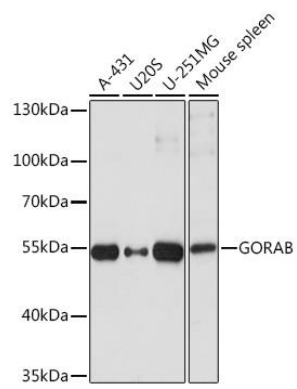
Immunogen:

A synthetic peptide corresponding to a sequence within amino acids 1-100 of human GORAB (NP_001139511.1).

Storage:

Store at -20°C. Avoid freeze / thaw cycles. Buffer: PBS with 0.02% sodium azide, 50% glycerol, pH7.3.

Product Images



Western blot - GORAB Rabbit pAb (CAB17245)