

# C1QTNF6 Rabbit Polyclonal Antibody



CAB17249

---

## Product Information

### Size:

20uL, 50uL, 100uL, 200uL

### Observed MW:

37KDa

### Calculated MW:

17kDa/28kDa/30kDa

### Applications:

WB IHC

### Reactivity:

Human, Mouse, Rat

## Protein Background

C1QTNF6 (C1q and tumor necrosis factor related protein 6) is a protein-coding gene. GO annotations related to this gene include identical protein binding. An important paralog of this gene is C1QTNF4.

## Immunogen information

### Gene ID:

114904

### Uniprot

Q9BXI9

### Synonyms:

C1QTNF6; CTFP6; CTRP6; ZACRP6

## Antibody Information

### Recommended dilutions:

WB 1:500 - 1:2000 IHC 1:50  
- 1:200

### Source:

Rabbit

### Isotype:

IgG

### Purification:

Affinity purification

### Immunogen:

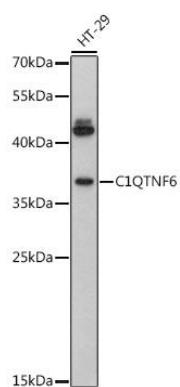
Recombinant fusion protein containing a sequence corresponding to amino acids 47-190 of human C1QTNF6 (NP\_114116.3).

### Storage:

Store at -20°C. Avoid freeze / thaw cycles. Buffer: PBS with 0.02% sodium azide, 50% glycerol, pH7.3.

## Product Images

---



Western blot - C1QTNF6 Rabbit pAb (CAB17249)