

PPARGC1B Rabbit Polyclonal Antibody



CAB17258

Product Information

Size:

20uL, 50uL, 100uL, 200uL

Observed MW:

113kDa

Calculated MW:

106kDa/108kDa/110kDa/112kDa/113kDa

Applications:

WB

Reactivity:

Mouse

Antibody Information

Recommended dilutions:

WB 1:500 - 1:2000

Source:

Rabbit

Isotype:

IgG

Purification:

Affinity purification

Protein Background

The protein encoded by this gene stimulates the activity of several transcription factors and nuclear receptors, including estrogen receptor alpha, nuclear respiratory factor 1, and glucocorticoid receptor. The encoded protein may be involved in fat oxidation, non-oxidative glucose metabolism, and the regulation of energy expenditure. This protein is downregulated in prediabetic and type 2 diabetes mellitus patients. Certain allelic variations in this gene increase the risk of the development of obesity. Three transcript variants encoding different isoforms have been found for this gene.

Immunogen information

Gene ID:

133522

Uniprot

Q86YN6

Synonyms:

PPARGC1B; ERRL1; PERC; PGC-1(beta); PGC1B; PPARGC1B

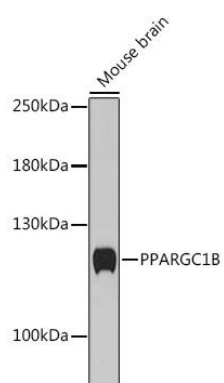
Immunogen:

A synthetic peptide corresponding to a sequence within amino acids 850-950 of human PPARGC1B (NP_001166170.1).

Storage:

Store at -20°C. Avoid freeze / thaw cycles. Buffer: PBS with 0.02% sodium azide, 50% glycerol, pH7.3.

Product Images



Western blot - PPARGC1B Rabbit pAb (CAB17258)