

ARX Rabbit Polyclonal Antibody



CAB17267

Product Information

Size:

20uL, 50uL, 100uL, 200uL

Observed MW:

58kDa

Calculated MW:

Applications:

WB IHC IF

Reactivity:

Human, Mouse, Rat

Antibody Information

Recommended dilutions:

WB 1:500 - 1:2000 IHC 1:50
- 1:200 IF 1:50 - 1:200

Source:

Rabbit

Isotype:

IgG

Purification:

Affinity purification

Protein Background

This gene is a homeobox-containing gene expressed during development. The expressed protein contains two conserved domains, a C-peptide (or aristaless domain) and the prd-like class homeobox domain. It is a member of the group-II aristaless-related protein family whose members are expressed primarily in the central and/or peripheral nervous system. This gene is thought to be involved in CNS development. Expansion of a polyalanine tract and other mutations in this gene cause X-linked mental retardation and epilepsy.

Immunogen information

Gene ID:

170302

Uniprot

Q96QS3

Synonyms:

ARX; CT121; EIEE1; ISSX; MRX29; MRX32; MRX33; MRX36; MRX38;
MRX43; MRX54; MRX76; MRX87; MRXS1; PRTS

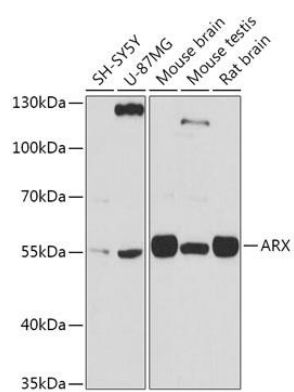
Immunogen:

A synthetic peptide corresponding to a sequence within amino acids 500 to the C-terminus of human ARX (NP_620689.1).

Storage:

Store at -20°C. Avoid freeze / thaw cycles. Buffer: PBS with 0.02% sodium azide, 50% glycerol, pH7.3.

Product Images



Western blot - ARX Rabbit pAb (CAB17267)