

RCOR2 Rabbit Polyclonal Antibody



CAB17275

Product Information

Size:

20uL, 50uL, 100uL, 200uL

Observed MW:

58kDa

Calculated MW:

58kDa

Applications:

WB

Reactivity:

Mouse, Rat

Antibody Information

Recommended dilutions:

WB 1:500 - 1:2000

Source:

Rabbit

Isotype:

IgG

Purification:

Affinity purification

Protein Background

Immunogen information

Gene ID:

283248

Uniprot

Q8IZ40

Synonyms:

RCOR2

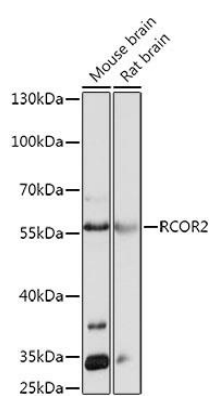
Immunogen:

A synthetic peptide corresponding to a sequence within amino acids 250-350 of human RCOR2 (NP_775858.2).

Storage:

Store at -20°C. Avoid freeze / thaw cycles. Buffer: PBS with 0.02% sodium azide, 50% glycerol, pH7.3.

Product Images



Western blot - RCOR2 Polyclonal Antibody (CAB17275)