

AMPKa1/AMPKa2 Rabbit Polyclonal Antibody



CAB17290

Product Information

Size:

20uL, 50uL, 100uL, 200uL

Observed MW:

60kDa

Calculated MW:

64kDa/65kDa

Applications:

WB IF

Reactivity:

Human, Mouse, Rat

Antibody Information

Recommended dilutions:

WB 1:500 - 1:2000 IF 1:50 - 1:100

Source:

Rabbit

Isotype:

IgG

Purification:

Affinity purification

Protein Background

Immunogen information

Gene ID:

5562/5563

Uniprot

Q13131/P54646

Synonyms:

AMPKa1/AMPKa2

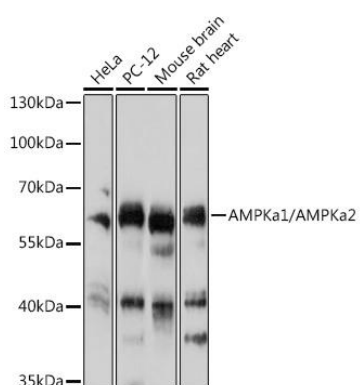
Immunogen:

Recombinant protein of human AMPKa1/AMPKa2.

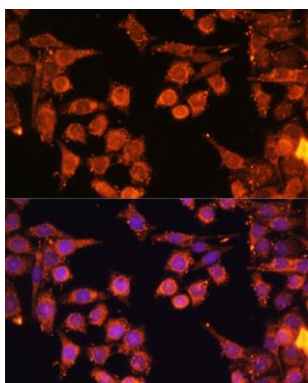
Storage:

Store at -20°C. Avoid freeze / thaw cycles. Buffer: PBS with 0.02% sodium azide, 50% glycerol, pH7.3.

Product Images



Western blot analysis of extracts of various cell lines, using AMPKa1/AMPKa2 antibody (CAB17290) at 1:1000 dilution. Secondary antibody: HRP Goat Anti-Rabbit IgG (H+L) (CABS014) at 1:10000 dilution. Lysates/proteins: 25ug per lane. Blocking buffer: 3% nonfat dry milk in TBST. Detection: ECL Basic Kit (CABM00020). Exposure time: 30s.



Immunofluorescence analysis of HeLa cells using AMPKa1/AMPKa2 antibody (CAB17290) at dilution of 1:100. Blue: DAPI for nuclear staining.