

# MAPK1/MAPK3 Rabbit Polyclonal Antibody



CAB17291

## Product Information

### Size:

20uL, 50uL, 100uL, 200uL

### Observed MW:

44kDa

### Calculated MW:

36kDa/41kDa/38kDa/40kDa/  
43kDa

### Applications:

WB IHC

### Reactivity:

Human, Mouse, Rat

## Antibody Information

### Recommended dilutions:

WB 1:500 - 1:2000 IHC 1:50  
- 1:200

### Source:

Rabbit

### Isotype:

IgG

### Purification:

Affinity purification

## Protein Background

MAP kinases, also known as extracellular signal-regulated kinases (ERKs), act as an integration point for multiple biochemical signals, and are involved in a wide variety of cellular processes such as proliferation, differentiation, transcription regulation and development. The activation of this kinase requires its phosphorylation by upstream kinases. Upon activation, this kinase translocates to the nucleus of the stimulated cells, where it phosphorylates nuclear targets.

## Immunogen information

### Gene ID:

5594/5595

### Uniprot

Q13131/P54646

### Synonyms:

MAPK1/MAPK3

### Immunogen:

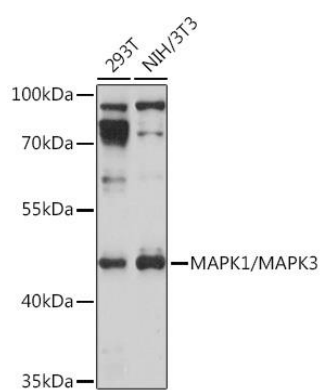
A synthetic peptide of human MAPK1/MAPK3.

### Storage:

Store at -20°C. Avoid freeze / thaw cycles. Buffer: PBS with 0.02% sodium azide, 50% glycerol, pH7.3.

## Product Images

---



Western blot - MAPK1/MAPK3 Rabbit pAb (CAB17291)