

# AKAP8 Rabbit Polyclonal Antibody



CAB17302

## Product Information

### Size:

20uL, 50uL, 100uL, 200uL

### Observed MW:

100kDa

### Calculated MW:

76kDa

### Applications:

WB IHC IF

### Reactivity:

Human, Rat

## Protein Background

This gene encodes a member of the A-kinase anchor protein family. A-kinase anchor proteins are scaffold proteins that contain a binding domain for the RI/RII subunit of protein kinase A (PKA) and recruit PKA and other signaling molecules to specific subcellular locations. This gene encodes a nuclear A-kinase anchor protein that binds to the RII alpha subunit of PKA and may play a role in chromosome condensation during mitosis by targeting PKA and the condensin complex to chromatin. A pseudogene of this gene is located on the short arm of chromosome 9.

## Immunogen information

### Gene ID:

10270

### Uniprot

O43823

### Synonyms:

AKAP8; AKAP 95; AKAP-8; AKAP-95; AKAP95

## Antibody Information

### Recommended dilutions:

WB 1:500 - 1:2000 IHC

1:100 - 1:200 IF 1:50 -

1:200

### Source:

Rabbit

### Isotype:

IgG

### Purification:

Affinity purification

### Immunogen:

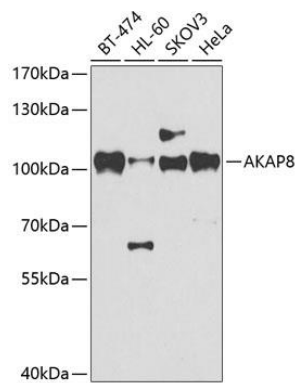
A synthetic peptide of human AKAP8

### Storage:

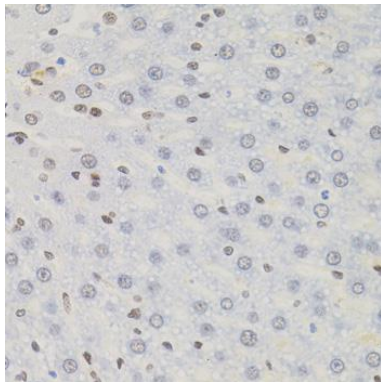
Store at -20°C. Avoid freeze / thaw cycles. Buffer: PBS with 0.02% sodium azide, 50% glycerol, pH7.3.

## Product Images

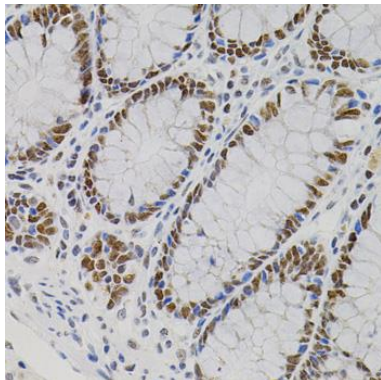
---



Western blot analysis of extracts of various cell lines, using AKAP8 antibody (CAB17302) at 1:500 dilution. Secondary antibody: HRP Goat Anti-Rabbit IgG (H+L) (CABS014) at 1:10000 dilution. Lysates/proteins: 25ug per lane. Blocking buffer: 3% nonfat dry milk in TBST. Detection: ECL Basic Kit (CABM00020). Exposure time: 90s.



Immunohistochemistry of paraffin-embedded rat liver using AKAP8 antibody (CAB17302) (40x lens).



Immunohistochemistry of paraffin-embedded human colon using AKAP8 antibody (CAB17302) (40x lens).