

DEPDC6 Rabbit Polyclonal Antibody



CAB17305

Product Information

Size:

20uL, 50uL, 100uL, 200uL

Observed MW:

Refer to figures

Calculated MW:

34kDa/46kDa

Applications:

WB IHC

Reactivity:

Human, Mouse, Rat

Antibody Information

Recommended dilutions:

WB 1:500 - 1:2000 IHC 1:50
- 1:100

Source:

Rabbit

Isotype:

IgG

Purification:

Affinity purification

Protein Background

Immunogen information

Gene ID:

64798

Uniprot

Q8TB45

Synonyms:

DEPTOR; DEP.6; DEPDC6

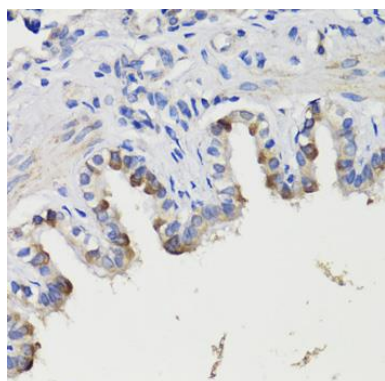
Immunogen:

Recombinant fusion protein containing a sequence corresponding to amino acids 1-220 of human DEPDC6 (NP_073620.2).

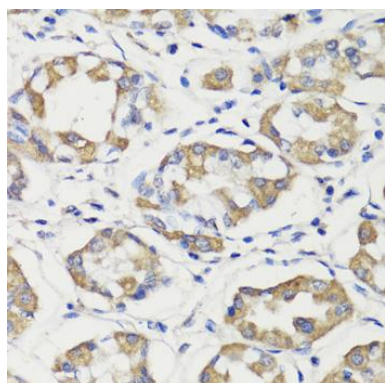
Storage:

Store at -20°C. Avoid freeze / thaw cycles. Buffer: PBS with 0.02% sodium azide, 50% glycerol, pH7.3.

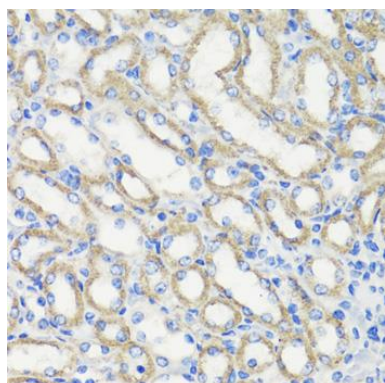
Product Images



Immunohistochemistry of paraffin-embedded rat bronchus using DEPDC6 antibody (CAB17305) at dilution of 1:200 (40x lens).



Immunohistochemistry of paraffin-embedded human stomach using DEPDC6 antibody (CAB17305) at dilution of 1:200 (40x lens).



Immunohistochemistry of paraffin-embedded mouse kidney using DEPDC6 antibody (CAB17305) at dilution of 1:200 (40x lens).