

# RNF20 Rabbit Polyclonal Antibody



CAB17309

---

## Product Information

### Size:

20uL, 50uL, 100uL, 200uL

### Observed MW:

114kDa

### Calculated MW:

113kDa

### Applications:

WB

### Reactivity:

Human, Mouse, Rat

## Antibody Information

### Recommended dilutions:

WB 1:500 - 1:2000

### Source:

Rabbit

### Isotype:

IgG

### Purification:

Affinity purification

## Protein Background

The protein encoded by this gene shares similarity with BRE1 of *S. cerevisiae*. The protein encoded by this human gene is an E3 ubiquitin ligase that regulates chromosome structure by monoubiquitinating histone H2B. This protein acts as a putative tumor suppressor and positively regulates the p53 tumor suppressor as well as numerous histone H2A and H2B genes. In contrast, this protein also suppresses the expression of several protooncogenes and growth-related genes, including many genes that are induced by epidermal growth factor. This gene selectively suppresses the expression of some genes by interfering with chromatin recruitment of transcription elongation factor SII (TFIIS).

## Immunogen information

### Gene ID:

56254

### Uniprot

Q5VTR2

### Synonyms:

RNF20; BRE1; BRE1A; hBRE1

### Immunogen:

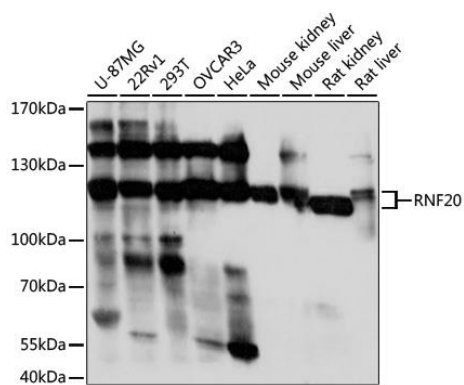
Recombinant fusion protein containing a sequence corresponding to amino acids 1-260 of human RNF20 (NP\_062538.5).

### Storage:

Store at -20°C. Avoid freeze / thaw cycles. Buffer: PBS with 0.02% sodium azide, 50% glycerol, pH7.3.

## Product Images

---



Western blot analysis of extracts of various cell lines, using RNF20 antibody (CAB17309) at 1:1000 dilution. Secondary antibody: HRP Goat Anti-Rabbit IgG (H+L) (CABS014) at 1:10000 dilution. Lysates/proteins: 25ug per lane. Blocking buffer: 3% nonfat dry milk in TBST. Detection: ECL Basic Kit (CABM00020). Exposure time: 90s.