

# TET3 Rabbit Polyclonal Antibody



CAB17310

---

## Product Information

### Size:

20uL, 50uL, 100uL, 200uL

### Observed MW:

179kDa

### Calculated MW:

77kDa/166kDa/179kDa

### Applications:

WB

### Reactivity:

Mouse

## Protein Background

Members of the ten-eleven translocation (TET) gene family, including TET3, play a role in the DNA methylation process (Langemeijer et al., 2009 [PubMed 19923888]).[supplied by OMIM, Nov 2010]

## Immunogen information

### Gene ID:

200424

### Uniprot

O43151

### Synonyms:

TET3; hCG\_40738; TET3

## Antibody Information

### Recommended dilutions:

WB 1:500 - 1:2000

### Source:

Rabbit

### Isotype:

IgG

### Purification:

Affinity purification

### Immunogen:

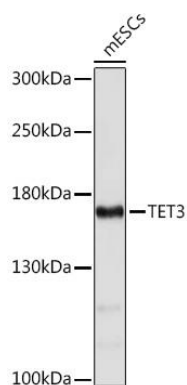
A synthetic peptide corresponding to a sequence within amino acids 1441-1540 of human TET3 (NP\_001274420.1).

### Storage:

Store at -20°C. Avoid freeze / thaw cycles. Buffer: PBS with 0.02% sodium azide, 50% glycerol, pH7.3.

## Product Images

---



Western blot analysis of extracts of mESCs cells, using TET3 Rabbit pAb (CAB17310) at 1:1000 dilution. Secondary antibody: HRP Goat Anti-Rabbit IgG (H+L) (CABS014) at 1:10000 dilution. Lysates/proteins: 25ug per lane. Blocking buffer: 3% nonfat dry milk in TBST. Detection: ECL Basic Kit (CABM00020). Exposure time: 5s.