

STAG1 Rabbit Polyclonal Antibody



CAB17315

Product Information

Size:

20uL, 50uL, 100uL, 200uL

Observed MW:

144kDa

Calculated MW:

144kDa

Applications:

WB

Reactivity:

Human

Protein Background

This gene is a member of the SCC3 family and is expressed in the nucleus. It encodes a component of cohesin, a multisubunit protein complex that provides sister chromatid cohesion along the length of a chromosome from DNA replication through prophase and prometaphase, after which it is dissociated in preparation for segregation during anaphase.

Immunogen information

Gene ID:

10274

Uniprot

Q8WVM7

Synonyms:

STAG1; SA1; SCC3A; MRD47

Antibody Information

Recommended dilutions:

WB 1:500 - 1:2000

Source:

Rabbit

Isotype:

IgG

Purification:

Affinity purification

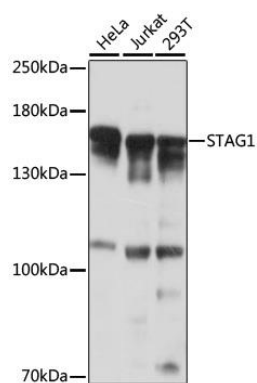
Immunogen:

Recombinant fusion protein containing a sequence corresponding to amino acids 930-1140 of human STAG1 (NP_005853.2).

Storage:

Store at -20°C. Avoid freeze / thaw cycles. Buffer: PBS with 0.02% sodium azide, 50% glycerol, pH7.3.

Product Images



Western blot analysis of extracts of various cell lines, using STAG1 antibody (CAB17315) at 1:1000 dilution. Secondary antibody: HRP Goat Anti-Rabbit IgG (H+L) (CABS014) at 1:10000 dilution. Lysates/proteins: 25ug per lane. Blocking buffer: 3% nonfat dry milk in TBST. Detection: ECL Basic Kit (CABM00020). Exposure time: 5s.