

HDAC6 Rabbit Polyclonal Antibody



CAB1732

Product Information

Size:

20uL, 50uL, 100uL, 200uL

Observed MW:

131kDa

Calculated MW:

114kDa/131kDa

Applications:

WB IHC

Reactivity:

Human, Mouse, Rat

Protein Background

Histones play a critical role in transcriptional regulation, cell cycle progression, and developmental events. Histone acetylation/deacetylation alters chromosome structure and affects transcription factor access to DNA. The protein encoded by this gene belongs to class II of the histone deacetylase/acuc/apha family. It contains an internal duplication of two catalytic domains which appear to function independently of each other. This protein possesses histone deacetylase activity and represses transcription.

Immunogen information

Gene ID:

10013

Uniprot

Q9UBN7

Synonyms:

HDAC6; CPBHM; HD6; JM21; PPP1R90

Antibody Information

Recommended dilutions:

WB 1:500 - 1:2000 IHC 1:50 - 1:200

Source:

Rabbit

Isotype:

IgG

Purification:

Affinity purification

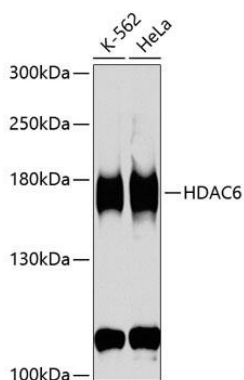
Immunogen:

Recombinant fusion protein containing a sequence corresponding to amino acids 1-200 of human HDAC6 (NP_006035.2).

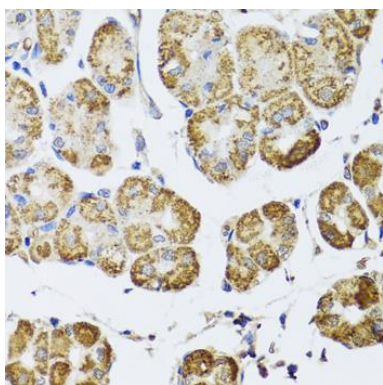
Storage:

Store at -20°C. Avoid freeze / thaw cycles. Buffer: PBS with 0.02% sodium azide, 50% glycerol, pH7.3.

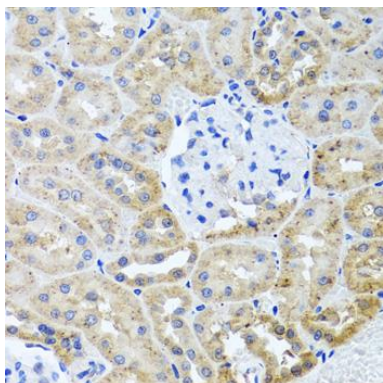
Product Images



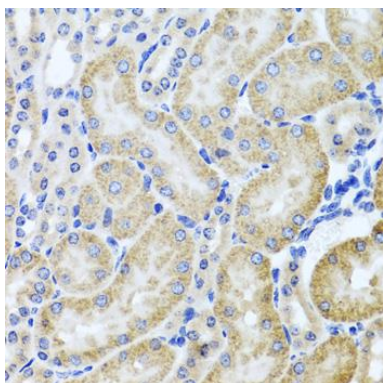
Western blot analysis of extracts of various cell lines, using HDAC6 antibody (CAB1732) at 1:1000 dilution. Secondary antibody: HRP Goat Anti-Rabbit IgG (H+L) (CABS014) at 1:10000 dilution. Lysates/proteins: 25ug per lane. Blocking buffer: 3% nonfat dry milk in TBST. Detection: ECL Basic Kit (CABM00020). Exposure time: 90s.



Immunohistochemistry of paraffin-embedded human stomach using HDAC6 antibody (CAB1732) at dilution of 1:100 (40x lens).



Immunohistochemistry of paraffin-embedded rat kidney using HDAC6 antibody (CAB1732) at dilution of 1:100 (40x lens).



Immunohistochemistry of paraffin-embedded mouse kidney using HDAC6 antibody (CAB1732) at dilution of 1:100 (40x lens).