

CD36 Rabbit Polyclonal Antibody



CAB17339

Product Information

Size:

20uL, 50uL, 100uL, 200uL

Observed MW:

90kDa

Calculated MW:

32kDa/46kDa/48kDa/53kDa

Applications:

WB IHC

Reactivity:

Human, Mouse, Rat

Antibody Information

Recommended dilutions:

WB 1:500 - 1:2000 IHC 1:10
- 1:100

Source:

Rabbit

Isotype:

IgG

Purification:

Affinity purification

Protein Background

The protein encoded by this gene is the fourth major glycoprotein of the platelet surface and serves as a receptor for thrombospondin in platelets and various cell lines. Since thrombospondins are widely distributed proteins involved in a variety of adhesive processes, this protein may have important functions as a cell adhesion molecule. It binds to collagen, thrombospondin, anionic phospholipids and oxidized LDL. It directly mediates cytoadherence of Plasmodium falciparum parasitized erythrocytes and it binds long chain fatty acids and may function in the transport and/or as a regulator of fatty acid transport. Mutations in this gene cause platelet glycoprotein deficiency. Multiple alternatively spliced transcript variants have been found for this gene.

Immunogen information

Gene ID:

948

Uniprot

P16671

Synonyms:

BDPLT10; CHDS7; FAT; GP3B; GP4; GPIV; PASIV; SCARB3; CD36

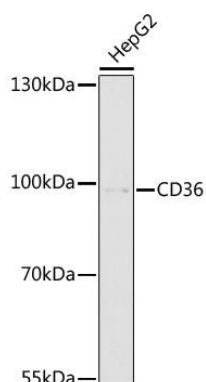
Immunogen:

Recombinant protein of human CD36.

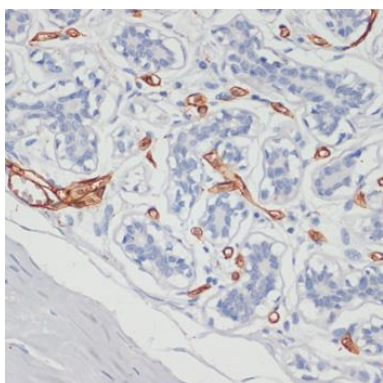
Storage:

Store at -20°C. Avoid freeze / thaw cycles. Buffer: PBS with 0.02% sodium azide, 50% glycerol, pH7.3.

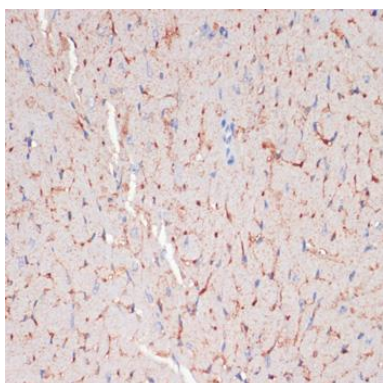
Product Images



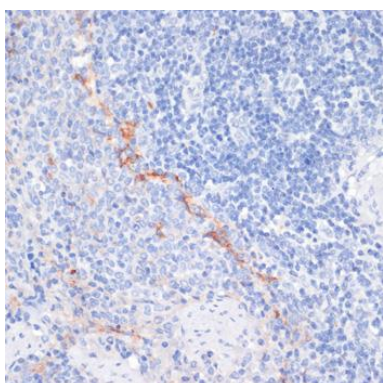
Western blot analysis of extracts of HepG2 cells, using CD36 antibody (CAB17339) at 1:1000 dilution. Secondary antibody: HRP Goat Anti-Rabbit IgG (H+L) (CABS014) at 1:10000 dilution. Lysates/proteins: 25ug per lane. Blocking buffer: 3% nonfat dry milk in TBST. Detection: ECL Enhanced Kit (CABM00021). Exposure time: 3min.



Immunohistochemistry of paraffin-embedded human breast using CD36 antibody (CAB17339) at dilution of 1:200 (40x lens).



Immunohistochemistry of paraffin-embedded mouse heart using CD36 antibody (CAB17339) at dilution of 1:200 (40x lens).



Immunohistochemistry of paraffin-embedded rat spleen using CD36 antibody (CAB17339) at dilution of 1:200 (40x lens).