

# MOBP Rabbit Polyclonal Antibody



CAB17355

---

## Product Information

### Size:

20uL, 50uL, 100uL, 200uL

### Observed MW:

59kDa

### Calculated MW:

9kDa/20kDa/23kDa

### Applications:

WB IF

### Reactivity:

Human, Mouse, Rat

## Antibody Information

### Recommended dilutions:

WB 1:500 - 1:1000 IF 1:50 - 1:200

### Source:

Rabbit

### Isotype:

IgG

### Purification:

Affinity purification

## Protein Background

### Immunogen information

#### Gene ID:

4336

#### Uniprot

Q13875

#### Synonyms:

MOBP

#### Immunogen:

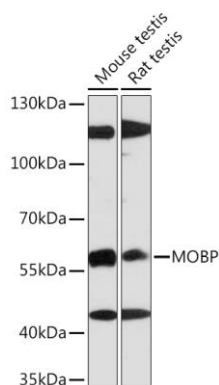
A synthetic Peptide of human MOBP

#### Storage:

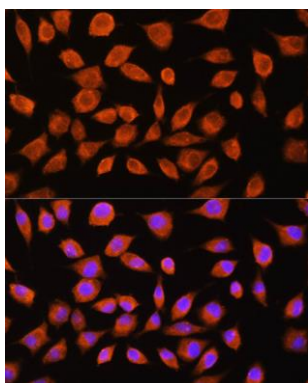
Store at -20°C. Avoid freeze / thaw cycles. Buffer: PBS with 0.02% sodium azide, 50% glycerol, pH7.3.

## Product Images

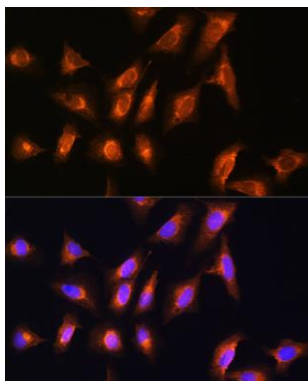
---



Western blot analysis of extracts of various cell lines, using MOBP Rabbit pAb (CAB17355) at 1:1000 dilution. Secondary antibody: HRP Goat Anti-Rabbit IgG (H+L) (CABS014) at 1:10000 dilution. Lysates/proteins: 25ug per lane. Blocking buffer: 3% nonfat dry milk in TBST. Detection: ECL Enhanced Kit (CABM00021). Exposure time: 90s.



Immunofluorescence analysis of L929 cells using MOBP Rabbit pAb (CAB17355) at dilution of 1:100. Blue: DAPI for nuclear staining.



Immunofluorescence analysis of U2OS cells using MOBP Rabbit pAb (CAB17355) at dilution of 1:100. Blue: DAPI for nuclear staining.