

# DOCK1 Rabbit Polyclonal Antibody



CAB17359

## Product Information

### Size:

20uL, 50uL, 100uL, 200uL

### Observed MW:

215kDa

### Calculated MW:

215kDa

### Applications:

WB

### Reactivity:

Human

## Protein Background

This gene encodes a member of the dedicator of cytokinesis protein family. Dedicator of cytokinesis proteins act as guanine nucleotide exchange factors for small Rho family G proteins. The encoded protein regulates the small GTPase Rac, thereby influencing several biological processes, including phagocytosis and cell migration. Overexpression of this gene has also been associated with certain cancers. Alternative splicing results in multiple transcript variants.

## Immunogen information

### Gene ID:

1793

### Uniprot

B2RUU3

### Synonyms:

ced5; DOCK180; DOCK1

## Antibody Information

### Recommended dilutions:

WB 1:500 - 1:2000

### Source:

Rabbit

### Isotype:

IgG

### Purification:

Affinity purification

### Immunogen:

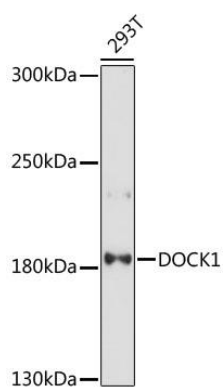
Recombinant protein of human DOCK1.

### Storage:

Store at -20°C. Avoid freeze / thaw cycles. Buffer: PBS with 0.02% sodium azide, 50% glycerol, pH7.3.

## Product Images

---



Western blot analysis of extracts of 293T cells, using DOCK1 antibody (CAB17359) at 1:1000 dilution. Secondary antibody: HRP Goat Anti-Rabbit IgG (H+L) (CABS014) at 1:10000 dilution. Lysates/proteins: 25ug per lane. Blocking buffer: 3% nonfat dry milk in TBST. Detection: ECL Basic Kit (CABM00020). Exposure time: 3min.