

# CAPRIN2 Rabbit Polyclonal Antibody



CAB17365

## Product Information

### Size:

20uL, 50uL, 100uL, 200uL

### Observed MW:

126kDa

### Calculated MW:

126kDa

### Applications:

WB

### Reactivity:

Human, Rat

## Protein Background

The protein encoded by this gene may regulate the transport of mRNA. It may play a role in the differentiation of erythroblasts. Multiple transcript variants encoding different isoforms have been found for this gene.

## Immunogen information

### Gene ID:

65981

### Uniprot

Q6IMN6

### Synonyms:

EEG1; EEG-1; C1QDC1; RNG140; CAPRIN2

## Antibody Information

### Recommended dilutions:

WB 1:500 - 1:2000

### Source:

Rabbit

### Isotype:

IgG

### Purification:

Affinity purification

### Immunogen:

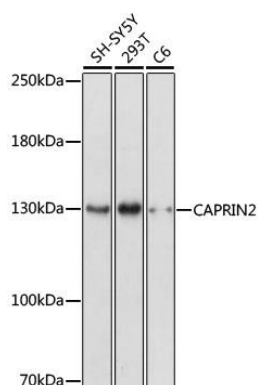
Recombinant protein of human CAPRIN2.

### Storage:

Store at -20°C. Avoid freeze / thaw cycles. Buffer: PBS with 0.02% sodium azide, 50% glycerol, pH7.3.

## Product Images

---



Western blot analysis of extracts of various cell lines, using CAPRIN2 antibody (CAB17365) at 1:1000 dilution. Secondary antibody: HRP Goat Anti-Rabbit IgG (H+L) (CABS014) at 1:10000 dilution. Lysates/proteins: 25ug per lane. Blocking buffer: 3% nonfat dry milk in TBST. Detection: ECL Enhanced Kit (CABM00021). Exposure time: 3min.