

Map2 Rabbit Polyclonal Antibody



CAB17409

Product Information

Size:

20uL, 50uL, 100uL, 200uL

Observed MW:

80kDa

Calculated MW:

49kDa/58kDa/199kDa

Applications:

WB IHC IF

Reactivity:

Mouse, Rat

Protein Background

This gene encodes a protein that belongs to the microtubule-associated protein family. The proteins of this family are thought to be involved in microtubule assembly, which is an essential step in neurogenesis. The products of similar genes in rat and mouse are neuron-specific cytoskeletal proteins that are enriched in dendrites, implicating a role in determining and stabilizing dendritic shape during neuron development. A number of alternatively spliced variants encoding distinct isoforms have been described.

Immunogen information

Gene ID:

4133

Uniprot

P11137

Synonyms:

MAP2; MAP2A; MAP2B; MAP2C; Map2

Antibody Information

Recommended dilutions:

WB 1:500 - 1:2000 IHC 1:50
- 1:200 IF 1:50 - 1:200

Source:

Rabbit

Isotype:

IgG

Purification:

Affinity purification

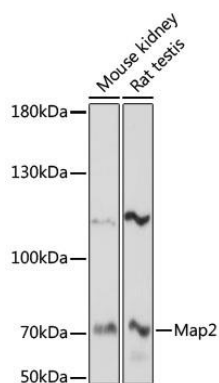
Immunogen:

Recombinant protein of human Map2.

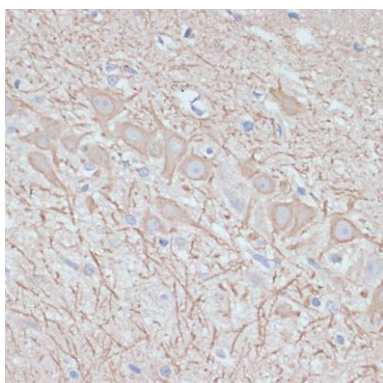
Storage:

Store at -20°C. Avoid freeze / thaw cycles. Buffer: PBS with 0.02% sodium azide, 50% glycerol, pH7.3.

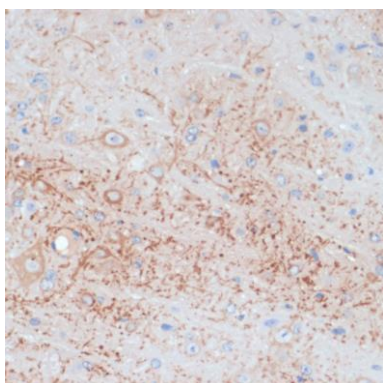
Product Images



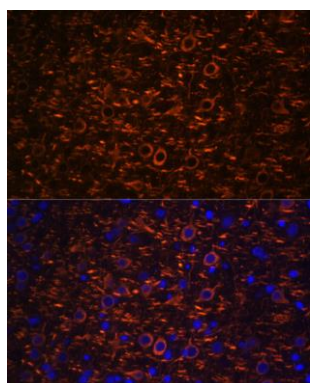
Western blot analysis of extracts of various cell lines, using Map2 antibody (CAB17409) at 1:1000 dilution. Secondary antibody: HRP Goat Anti-Rabbit IgG (H+L) (CABS014) at 1:10000 dilution. Lysates/proteins: 25ug per lane. Blocking buffer: 3% nonfat dry milk in TBST. Detection: ECL Basic Kit (CABM00020). Exposure time: 90s.



Immunohistochemistry of paraffin-embedded rat brain using Map2 antibody (CAB17409) at dilution of 1:100 (40x lens).



Immunohistochemistry of paraffin-embedded mouse brain using Map2 antibody (CAB17409) at dilution of 1:100 (40x lens).



Immunofluorescence analysis of rat brain cells using Map2 antibody (CAB17409) at dilution of 1:100. Blue: DAPI for nuclear staining.