

PAXIP1 Rabbit Polyclonal Antibody



CAB17431

Product Information

Size:

20uL, 50uL, 100uL, 200uL

Observed MW:

Refer to figures

Calculated MW:

93kDa/117kDa/121kDa

Applications:

WB IHC

Reactivity:

Human

Protein Background

This gene is a member of the paired box (PAX) gene family and encodes a nuclear protein with six BRCT (breast cancer carboxy-terminal) domains. This protein plays a critical role in maintaining genome stability, condensation of chromatin and progression through mitosis.

Immunogen information

Gene ID:

22976

Uniprot

Q6ZW49

Synonyms:

PAXIP1; CAGF28; CAGF29; PACIP1; PAXIP1L; PTIP; TNRC2

Antibody Information

Recommended dilutions:

WB 1:500 - 1:1000 IHC 1:50
- 1:200

Source:

Rabbit

Isotype:

IgG

Purification:

Affinity purification

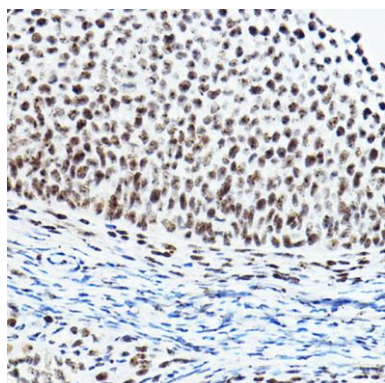
Immunogen:

Recombinant protein of human PAXIP1.

Storage:

Store at -20°C. Avoid freeze / thaw cycles. Buffer: PBS with 0.02% sodium azide, 50% glycerol, pH7.3.

Product Images



Immunohistochemistry - PAXIP1 Rabbit pAb (CAB17431)