

# CD24 Rabbit Polyclonal Antibody



CAB17444

## Product Information

**Size:**

50uL

**Observed MW:**

45KDa/70KDa

**Calculated MW:**

8kDa

**Applications:**

WB IHC

**Reactivity:**

Human, Mouse, Rat

## Antibody Information

**Recommended dilutions:**

WB 1:500 - 1:1000 IHC 1:50  
- 1:100

**Source:**

Rabbit

**Isotype:**

IgG

**Purification:**

Affinity purification

## Protein Background

This gene encodes a sialoglycoprotein that is expressed on mature granulocytes and B cells and modulates growth and differentiation signals to these cells. The precursor protein is cleaved to a short 32 amino acid mature peptide which is anchored via a glycosyl phosphatidylinositol (GPI) link to the cell surface. This gene was missing from previous genome assemblies, but is properly located on chromosome 6. Non-transcribed pseudogenes have been designated on chromosomes 1, 15, 20, and Y. Alternative splicing results in multiple transcript variants.

## Immunogen information

**Gene ID:**

100133941

**Uniprot**

P25063

**Synonyms:**

CD24; CD24A; CD24 molecule; CD247

**Immunogen:**

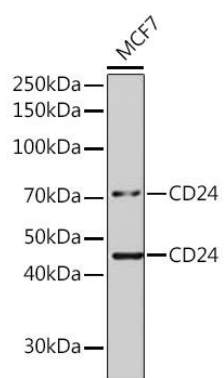
Recombinant protein of human CD24.

**Storage:**

Store at -20°C. Avoid freeze / thaw cycles. Buffer: PBS with 0.02% sodium azide, 50% glycerol, pH7.3.

## Product Images

---



Western blot analysis of extracts of MCF7 cells, using CD24 antibody (CAB17444).