

CAB17445

Product Information

Size:

20uL, 50uL, 100uL, 200uL

Observed MW:

20kDa

Calculated MW:

13kDa

Applications:

WB

Reactivity:

Human, Mouse, Rat

Protein Background

This gene encodes a member of the galanin family of neuropeptides. The encoded protein binds galanin receptors 1, 2 and 3 with the highest affinity for galanin receptor 3 and has been implicated in biological processes involving the central nervous system including hypothalamic regulation of metabolism and reproduction. A peptide encoded by a splice variant of this gene, termed alarin, has vasoactive properties, displays antimicrobial activity against E. coli, and may serve as a marker for neuroblastic tumors.

Immunogen information

Gene ID:

85569

Uniprot

Q9UBC7

Synonyms:

GALP

Antibody Information

Recommended dilutions:

WB 1:500 - 1:2000

Source:

Rabbit

Isotype:

IgG

Purification:

Affinity purification

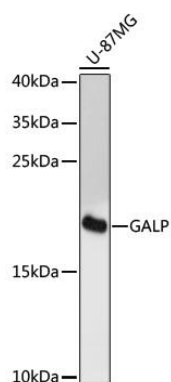
Immunogen:

Recombinant fusion protein containing a sequence corresponding to amino acids 25-116 of human GALP (NP_149097.1).

Storage:

Store at -20°C. Avoid freeze / thaw cycles. Buffer: PBS with 0.02% sodium azide, 50% glycerol, pH7.3.

Product Images



Western blot analysis of extracts of U-87MG cells, using GALP antibody (CAB17445) at 1:3000 dilution. Secondary antibody: HRP Goat Anti-Rabbit IgG (H+L) (CABS014) at 1:10000 dilution. Lysates/proteins: 25ug per lane. Blocking buffer: 3% nonfat dry milk in TBST. Detection: ECL Enhanced Kit (CABM00021). Exposure time: 90s.