

SCRIB Rabbit Polyclonal Antibody



CAB17450

Product Information

Size:

20uL, 50uL, 100uL, 200uL

Observed MW:

260kDa

Calculated MW:

175kDa

Applications:

WB IF

Reactivity:

Human, Mouse

Protein Background

This gene encodes a protein that was identified as being similar to the Drosophila scribble protein. The mammalian protein is involved in tumor suppression pathways. As a scaffold protein involved in cell polarization processes, this protein binds to many other proteins. The encoded protein binds to papillomavirus E6 protein via its PDZ domain and the C-terminus of E6. Two alternatively spliced transcript variants that encode different protein isoforms have been found for this gene.

Immunogen information

Gene ID:

23513

Uniprot

Q14160

Synonyms:

CRIB1; SCRB1; SCRIB1; Vartul; SCRIB

Antibody Information

Recommended dilutions:

WB 1:500 - 1:2000 IF 1:50 - 1:200

Source:

Rabbit

Isotype:

IgG

Purification:

Affinity purification

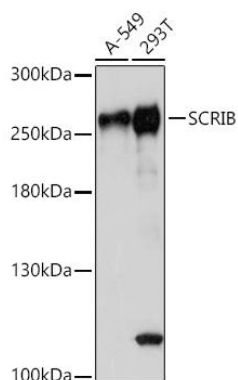
Immunogen:

Recombinant protein of human SCRIB.

Storage:

Store at -20°C. Avoid freeze / thaw cycles. Buffer: PBS with 0.02% sodium azide, 50% glycerol, pH7.3.

Product Images



Western blot analysis of extracts of various cell lines, using SCRIB antibody (CAB17450) at 1:1000 dilution. Secondary antibody: HRP Goat Anti-Rabbit IgG (H+L) (CABS014) at 1:10000 dilution. Lysates/proteins: 25ug per lane. Blocking buffer: 3% nonfat dry milk in TBST. Detection: ECL Basic Kit (CABM00020). Exposure time: 5s.