

# CLCN6 Rabbit Polyclonal Antibody



CAB17458

## Product Information

### Size:

20uL, 50uL, 100uL, 200uL

### Observed MW:

Refer to figures

### Calculated MW:

### Applications:

IHC

### Reactivity:

Mouse

## Antibody Information

### Recommended dilutions:

IHC 1:50 - 1:100

### Source:

Rabbit

### Isotype:

IgG

### Purification:

Affinity purification

## Protein Background

This gene encodes a member of the voltage-dependent chloride channel protein family. Members of this family can function as either chloride channels or antiporters. This protein is primarily localized to late endosomes and functions as a chloride/proton antiporter. Alternate splicing results in both coding and non-coding variants. Additional alternately spliced variants have been described but their full-length structure is unknown. [provided by RefSeq, Mar 2012]

## Immunogen information

### Gene ID:

1185

### Uniprot

P51797

### Synonyms:

CLC-6; CLCN6

### Immunogen:

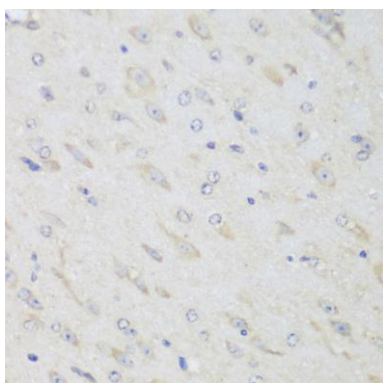
Recombinant fusion protein containing a sequence corresponding to amino acids 1-80 of human CLCN6 (NP\_001277.1).

### Storage:

Store at -20°C. Avoid freeze / thaw cycles. Buffer: PBS with 0.02% sodium azide, 50% glycerol, pH7.3.

## Product Images

---



Immunohistochemistry - CLCN6 Polyclonal Antibody (CAB17458)