

MTTP Rabbit Polyclonal Antibody



CAB1746

Product Information

Size:

20uL, 50uL, 100uL, 200uL

Observed MW:

99kDa

Calculated MW:

16kDa/99kDa

Applications:

WB

Reactivity:

Mouse, Rat

Protein Background

MTP encodes the large subunit of the heterodimeric microsomal triglyceride transfer protein. Protein disulfide isomerase (PDI) completes the heterodimeric microsomal triglyceride transfer protein, which has been shown to play a central role in lipoprotein assembly. Mutations in MTP can cause abetalipoproteinemia.

Immunogen information

Gene ID:

4547

Uniprot

P55157

Synonyms:

MTTP; ABL; MTP

Antibody Information

Recommended dilutions:

WB 1:500 - 1:2000

Source:

Rabbit

Isotype:

IgG

Purification:

Affinity purification

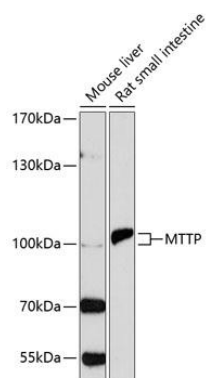
Immunogen:

Recombinant fusion protein containing a sequence corresponding to amino acids 1-130 of human MTTP (NP_000244.2).

Storage:

Store at -20°C. Avoid freeze / thaw cycles. Buffer: PBS with 0.02% sodium azide, 50% glycerol, pH7.3.

Product Images



Western blot analysis of extracts of various cell lines, using MTTP antibody (CAB1746) at 1:1000 dilution. Secondary antibody: HRP Goat Anti-Rabbit IgG (H+L) (CABS014) at 1:10000 dilution. Lysates/proteins: 25ug per lane. Blocking buffer: 3% nonfat dry milk in TBST. Detection: ECL Basic Kit (CABM00020). Exposure time: 90s.