

COL9A2 Rabbit Polyclonal Antibody



CAB17461

Product Information

Size:

20uL, 50uL, 100uL, 200uL

Observed MW:

65kDa

Calculated MW:

Applications:

WB

Reactivity:

Rat

Protein Background

This gene encodes one of the three alpha chains of type IX collagen, the major collagen component of hyaline cartilage. Type IX collagen, a heterotrimeric molecule, is usually found in tissues containing type II collagen, a fibrillar collagen. This chain is unusual in that, unlike the other two type IX alpha chains, it contains a covalently attached glycosaminoglycan side chain. Mutations in this gene are associated with multiple epiphyseal dysplasia. [provided by RefSeq, Jul 2008]

Immunogen information

Gene ID:

1298

Uniprot

Q14055

Synonyms:

DJ39G22.4; EDM2; MED; STL5; COL9A2

Antibody Information

Recommended dilutions:

WB 1:500 - 1:2000

Source:

Rabbit

Isotype:

IgG

Purification:

Affinity purification

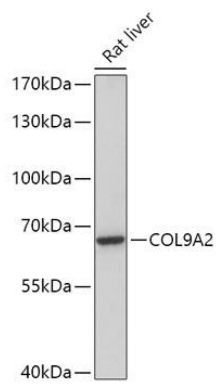
Immunogen:

A synthetic peptide of Human COL9A2.

Storage:

Store at -20°C. Avoid freeze / thaw cycles. Buffer: PBS with 0.02% sodium azide, 50% glycerol, pH7.3.

Product Images



Western blot - COL9A2 Polyclonal Antibody (CAB17461)