

DRG2 Rabbit Polyclonal Antibody



CAB17476

Product Information

Size:

20uL, 50uL, 100uL, 200uL

Observed MW:

45kDa

Calculated MW:

40kDa

Applications:

WB IF

Reactivity:

Human, Mouse, Rat

Protein Background

This gene encodes a GTP-binding protein known to function in the regulation of cell growth and differentiation. Read-through transcripts containing this gene and a downstream gene have been identified, but they are not thought to encode a fusion protein. This gene is located within the Smith-Magenis syndrome region on chromosome 17. [provided by RefSeq, Jan 2012]

Immunogen information

Gene ID:

1819

Uniprot

P55039

Synonyms:

DRG2

Antibody Information

Recommended dilutions:

WB 1:500 - 1:2000 IF 1:50 - 1:100

Source:

Rabbit

Isotype:

IgG

Purification:

Affinity purification

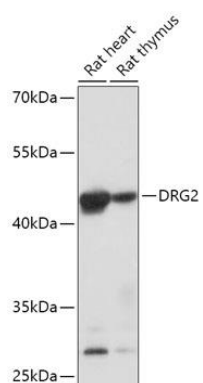
Immunogen:

Recombinant fusion protein containing a sequence corresponding to amino acids 150-260 of human DRG2 (NP_001379.1).

Storage:

Store at -20°C. Avoid freeze / thaw cycles. Buffer: PBS with 0.02% sodium azide, 50% glycerol, pH7.3.

Product Images



Western blot - DRG2 Polyclonal Antibody (CAB17476)