

# E2F1 Rabbit Polyclonal Antibody



CAB17478

## Product Information

### Size:

20uL, 50uL, 100uL, 200uL

### Observed MW:

Refer to figures

### Calculated MW:

46kDa

### Applications:

IF

### Reactivity:

Human, Mouse, Rat

## Antibody Information

### Recommended dilutions:

IF 1:50 - 1:200

### Source:

Rabbit

### Isotype:

IgG

### Purification:

Affinity purification

## Protein Background

The protein encoded by this gene is a member of the E2F family of transcription factors. The E2F family plays a crucial role in the control of cell cycle and action of tumor suppressor proteins and is also a target of the transforming proteins of small DNA tumor viruses. The E2F proteins contain several evolutionally conserved domains found in most members of the family. These domains include a DNA binding domain, a dimerization domain which determines interaction with the differentiation regulated transcription factor proteins (DP), a transactivation domain enriched in acidic amino acids, and a tumor suppressor protein association domain which is embedded within the transactivation domain. This protein and another 2 members, E2F2 and E2F3, have an additional cyclin binding domain. This protein binds preferentially to retinoblastoma protein pRB in a cell-cycle dependent manner. It can mediate both cell proliferation and p53-dependent/independent apoptosis. [provided by RefSeq, Jul 2008]

## Immunogen information

### Gene ID:

1869

### Uniprot

Q01094

### Synonyms:

E2F-1; RBAP1; RBBP3; RBP3; E2F1

### Immunogen:

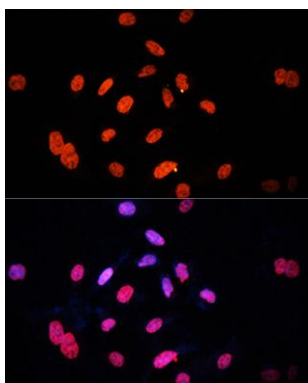
Recombinant fusion protein of Human E2F1.

### Storage:

Store at -20°C. Avoid freeze / thaw cycles. Buffer: PBS with 0.02% sodium azide, 50% glycerol, pH7.3.

## Product Images

---



Immunofluorescence - E2F1 Rabbit pAb (CAB17478)