

# FCGR1B Rabbit Polyclonal Antibody



CAB17483

## Product Information

### Size:

20uL, 50uL, 100uL, 200uL

### Observed MW:

27kDa

### Calculated MW:

### Applications:

WB IHC

### Reactivity:

Human, Mouse

## Antibody Information

### Recommended dilutions:

WB 1:500 - 1:2000 IHC 1:50  
- 1:200

### Source:

Rabbit

### Isotype:

IgG

### Purification:

Affinity purification

## Protein Background

Three distinct, but closely related classes of receptors that bind the Fc portion of IgG have been identified (FcγRI, II and III). The FcγRI family consists of three closely related genes termed A, B, and C. This gene encodes the low affinity FcγRIIB receptor that may play an important role in humoral immune response. Alternatively spliced transcript variants encoding different isoforms have been described for this gene. [provided by RefSeq, Oct 2011]

## Immunogen information

### Gene ID:

2210

### Uniprot

Q92637

### Synonyms:

CD64b; IGFRB; FCGR1B

### Immunogen:

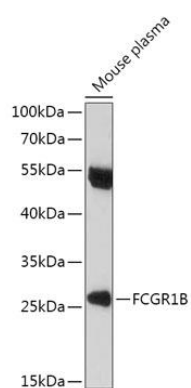
A synthetic peptide of Human FCGR1B.

### Storage:

Store at -20°C. Avoid freeze / thaw cycles. Buffer: PBS with 0.02% sodium azide, 50% glycerol, pH7.3.

## Product Images

---



Western blot - FCGR1B Polyclonal Antibody (CAB17483)