

GK2 Rabbit Polyclonal Antibody



CAB17488

Product Information

Size:

20uL, 50uL, 100uL, 200uL

Observed MW:

56kDa

Calculated MW:

Applications:

WB IF

Reactivity:

Human, Mouse, Rat

Antibody Information

Recommended dilutions:

WB 1:500 - 1:2000 IF 1:50 - 1:100

Source:

Rabbit

Isotype:

IgG

Purification:

Affinity purification

Protein Background

Immunogen information

Gene ID:

2712

Uniprot

Q14410

Synonyms:

GKP2; GKTA; GK2

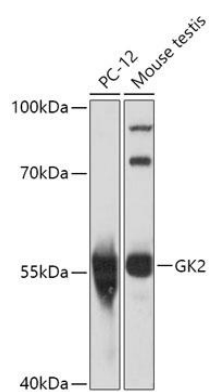
Immunogen:

Recombinant fusion protein containing a sequence corresponding to amino acids 1-150 of human GK2 (NP_149991.2).

Storage:

Store at -20°C. Avoid freeze / thaw cycles. Buffer: PBS with 0.02% sodium azide, 50% glycerol, pH7.3.

Product Images



Western blot - GK2 Polyclonal Antibody (CAB17488)