

KCNJ13 Rabbit Polyclonal Antibody



CAB17504

Product Information

Size:

20uL, 50uL, 100uL, 200uL

Observed MW:

45kDa

Calculated MW:

10kDa/40kDa

Applications:

WB

Reactivity:

Human, Mouse

Protein Background

This gene encodes a member of the inwardly rectifying potassium channel family of proteins. Members of this family form ion channel pores that allow potassium ions to pass into a cell. The encoded protein belongs to a subfamily of low signal channel conductance proteins that have a low dependence on potassium concentration. Mutations in this gene are associated with snowflake vitreoretinal degeneration. Alternate splicing results in multiple transcript variants.[provided by RefSeq, Feb 2010]

Immunogen information

Gene ID:

3769

Uniprot

O60928

Synonyms:

KCNJ13; KIR1.4; KIR7.1; LCA16; SVD

Antibody Information

Recommended dilutions:

WB 1:500 - 1:2000

Source:

Rabbit

Isotype:

IgG

Purification:

Affinity purification

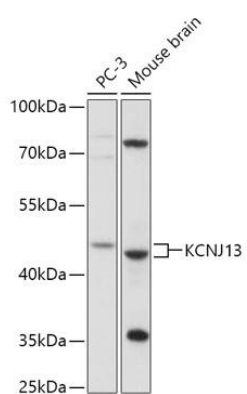
Immunogen:

Recombinant fusion protein containing a sequence corresponding to amino acids 160-360 of human KCNJ13 (NP_002233.2).

Storage:

Store at -20°C. Avoid freeze / thaw cycles. Buffer: PBS with 0.02% sodium azide, 50% glycerol, pH7.3.

Product Images



Western blot - KCNJ13 Polyclonal Antibody (CAB17504)