

# TRPM1 Rabbit Polyclonal Antibody



CAB17509

## Product Information

### Size:

20uL, 50uL, 100uL, 200uL

### Observed MW:

Refer to figures

### Calculated MW:

### Applications:

IHC

### Reactivity:

Mouse

## Antibody Information

### Recommended dilutions:

IHC 1:50 - 1:100

### Source:

Rabbit

### Isotype:

IgG

### Purification:

Affinity purification

## Protein Background

This gene encodes a member of the transient receptor potential melastatin subfamily of transient receptor potential ion channels. The encoded protein is a calcium permeable cation channel that is expressed in melanocytes and may play a role in melanin synthesis. Specific mutations in this gene are the cause autosomal recessive complete congenital stationary night blindness-1C. The expression of this protein is inversely correlated with melanoma aggressiveness and as such it is used as a prognostic marker for melanoma metastasis. Alternate splicing results in multiple transcript variants. [provided by RefSeq, Oct 2011]

## Immunogen information

### Gene ID:

4308

### Uniprot

Q7Z4N2

### Synonyms:

CSNB1C; LTRPC1; MLSN1; TRPM1

### Immunogen:

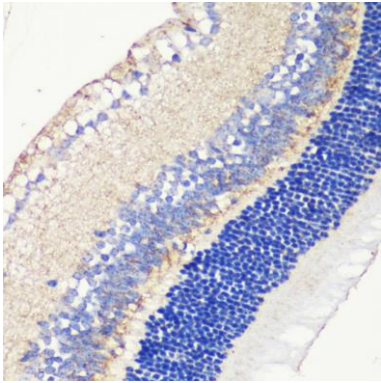
Recombinant fusion protein containing a sequence corresponding to amino acids 1343-1642 of human TRPM1 (NP\_001238949.1).

### Storage:

Store at -20°C. Avoid freeze / thaw cycles. Buffer: PBS with 0.02% sodium azide, 50% glycerol, pH7.3.

## Product Images

---



Immunohistochemistry - TRPM1 Polyclonal Antibody (CAB17509)