

PBX3 Rabbit Polyclonal Antibody



CAB17514

Product Information

Size:

20uL, 50uL, 100uL, 200uL

Observed MW:

47kDa

Calculated MW:

19kDa/27kDa/38kDa/39kDa/
47kDa

Applications:

WB

Reactivity:

Human, Mouse

Antibody Information

Recommended dilutions:

WB 1:500 - 1:2000

Source:

Rabbit

Isotype:

IgG

Purification:

Affinity purification

Protein Background

Immunogen information

Gene ID:

5090

Uniprot

P40426

Synonyms:

PBX3

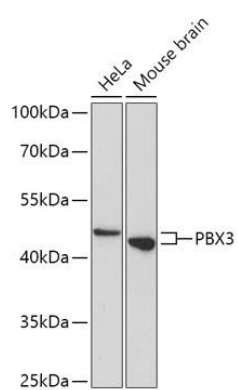
Immunogen:

A synthetic peptide of Human PBX3.

Storage:

Store at -20°C. Avoid freeze / thaw cycles. Buffer: PBS with 0.02% sodium azide, 50% glycerol, pH7.3.

Product Images



Western blot - PBX3 Polyclonal Antibody (CAB17514)