

PDE6G Rabbit Polyclonal Antibody



CAB17516

Product Information

Size:

20uL, 50uL, 100uL, 200uL

Observed MW:

13kDa

Calculated MW:

Applications:

WB IF

Reactivity:

Human, Mouse, Rat

Antibody Information

Recommended dilutions:

WB 1:500 - 1:2000 IF 1:50 - 1:200

Source:

Rabbit

Isotype:

IgG

Purification:

Affinity purification

Protein Background

This gene encodes the gamma subunit of cyclic GMP-phosphodiesterase, which is composed of alpha- and beta- catalytic subunits and two identical, inhibitory gamma subunits. This gene is expressed in rod photoreceptors and functions in the phototransduction signaling cascade. It is also expressed in a variety of other tissues, and has been shown to regulate the c-Src protein kinase and G-protein-coupled receptor kinase 2. Alternative splicing results in multiple transcript variants. [provided by RefSeq, Feb 2009]

Immunogen information

Gene ID:

5148

Uniprot

P18545

Synonyms:

PDEG; RP57; PDE6G

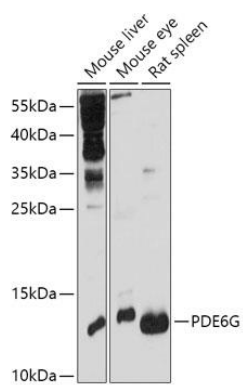
Immunogen:

Recombinant fusion protein containing a sequence corresponding to amino acids 1-87 of human PDE6G (NP_002593.1).

Storage:

Store at -20°C. Avoid freeze / thaw cycles. Buffer: PBS with 0.02% sodium azide, 50% glycerol, pH7.3.

Product Images



Western blot - PDE6G Polyclonal Antibody (CAB17516)