

# RTN4 Rabbit Polyclonal Antibody



CAB1752

## Product Information

### Size:

20uL, 50uL, 100uL, 200uL

### Observed MW:

200kDa

### Calculated MW:

22kDa/40kDa/42kDa/106kDa  
/108kDa/129kDa

### Applications:

WB IF

### Reactivity:

Mouse, Rat

## Antibody Information

### Recommended dilutions:

WB 1:500 - 1:2000 IF 1:50 -  
1:200

### Source:

Rabbit

### Isotype:

IgG

### Purification:

Affinity purification

## Protein Background

This gene belongs to the family of reticulon encoding genes. Reticulons are associated with the endoplasmic reticulum, and are involved in neuroendocrine secretion or in membrane trafficking in neuroendocrine cells. The product of this gene is a potent neurite outgrowth inhibitor which may also help block the regeneration of the central nervous system in higher vertebrates. Alternatively spliced transcript variants derived both from differential splicing and differential promoter usage and encoding different isoforms have been identified.

## Immunogen information

### Gene ID:

57142

### Uniprot

Q9NQC3

### Synonyms:

RTN4; ASY; NI220/250; NOGO; NSP; NSP-CL; Nbla00271;  
Nbla10545; RTN-X; RTN4-A; RTN4-B1; RTN4-B2; RTN4-C; NOGO-  
A; Nogo-B; Nogo-C; NOGOC

### Immunogen:

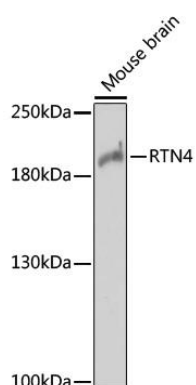
Recombinant protein of human RTN4.

### Storage:

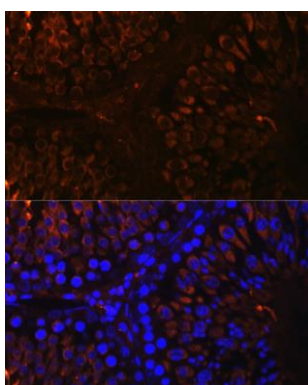
Store at -20°C. Avoid freeze / thaw cycles. Buffer: PBS with 0.02%  
sodium azide, 50% glycerol, pH7.3.

## Product Images

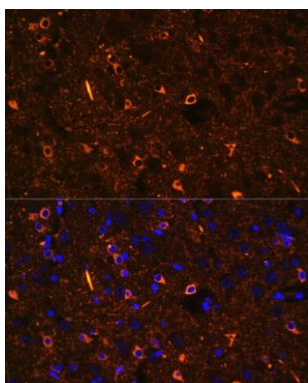
---



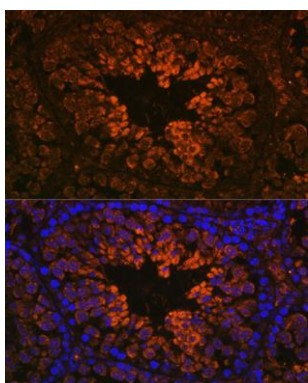
Western blot analysis of extracts of mouse brain, using RTN4 antibody (CAB1752) at 1:1000 dilution. Secondary antibody: HRP Goat Anti-Rabbit IgG (H+L) (CABS014) at 1:10000 dilution. Lysates/proteins: 25ug per lane. Blocking buffer: 3% nonfat dry milk in TBST. Detection: ECL Enhanced Kit (CABM00021). Exposure time: 5min.



Immunofluorescence analysis of rat testis using RTN4 antibody (CAB1752) at dilution of 1:100. Blue: DAPI for nuclear staining.



Immunofluorescence analysis of rat brain using RTN4 antibody (CAB1752) at dilution of 1:100. Blue: DAPI for nuclear staining.



Immunofluorescence analysis of mouse testis using RTN4 antibody (CAB1752) at dilution of 1:100. Blue: DAPI for nuclear staining.