

# PNLIPRP1 Rabbit Polyclonal Antibody



CAB17520

---

## Product Information

### Size:

20uL, 50uL, 100uL, 200uL

### Observed MW:

52kDa

### Calculated MW:

### Applications:

WB IHC IF

### Reactivity:

Human, Mouse, Rat

## Antibody Information

### Recommended dilutions:

WB 1:500 - 1:2000 IHC

1:100 - 1:200 IF 1:50 -

1:200

### Source:

Rabbit

### Isotype:

IgG

### Purification:

Affinity purification

## Protein Background

## Immunogen information

### Gene ID:

5407

### Uniprot

P54315

### Synonyms:

PLRP1; PNLIPRP1

### Immunogen:

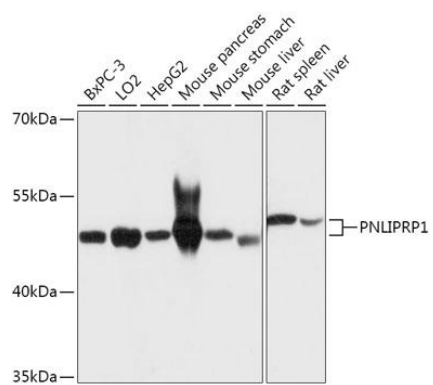
Recombinant fusion protein containing a sequence corresponding to amino acids 298-467 of human PNLIPRP1 (NP\_006220.1).

### Storage:

Store at -20°C. Avoid freeze / thaw cycles. Buffer: PBS with 0.02% sodium azide, 50% glycerol, pH7.3.

## Product Images

---



Western blot - PNLIPRP1 Polyclonal Antibody (CAB17520)