

# SH3BGRL Rabbit Polyclonal Antibody



CAB17530

---

## Product Information

### Size:

20uL, 50uL, 100uL, 200uL

### Observed MW:

16kDa

### Calculated MW:

12kDa

### Applications:

WB IHC IF

### Reactivity:

Human, Mouse, Rat

## Antibody Information

### Recommended dilutions:

WB 1:500 - 1:2000 IHC  
1:100 - 1:200 IF 1:50 -  
1:200

### Source:

Rabbit

### Isotype:

IgG

### Purification:

Affinity purification

## Protein Background

### Immunogen information

#### Gene ID:

6451

#### Uniprot

O75368

#### Synonyms:

HEL-S-115; SH3BGR; SH3BGRL

#### Immunogen:

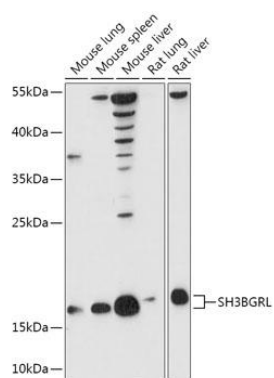
Recombinant fusion protein containing a sequence corresponding to amino acids 1-114 of human SH3BGRL (NP\_003013.1).

#### Storage:

Store at -20°C. Avoid freeze / thaw cycles. Buffer: PBS with 0.02% sodium azide, 50% glycerol, pH7.3.

## Product Images

---



Western blot - SH3BGRL Polyclonal Antibody (CAB17530)