

# SLC9A3 Rabbit Polyclonal Antibody



CAB17532

---

## Product Information

### Size:

20uL, 50uL, 100uL, 200uL

### Observed MW:

100kDa

### Calculated MW:

### Applications:

WB

### Reactivity:

Rat

## Protein Background

The protein encoded by this gene is an epithelial brush border Na/H exchanger that uses an inward sodium ion gradient to expel acids from the cell. Defects in this gene are a cause of congenital secretory sodium diarrhea. Pseudogenes of this gene exist on chromosomes 10 and 22. [provided by RefSeq, Mar 2016]

## Immunogen information

### Gene ID:

6550

### Uniprot

P48764

### Synonyms:

DIAR8; NHE-3; NHE3; SLC9A3

## Antibody Information

### Recommended dilutions:

WB 1:500 - 1:2000

### Source:

Rabbit

### Isotype:

IgG

### Purification:

Affinity purification

### Immunogen:

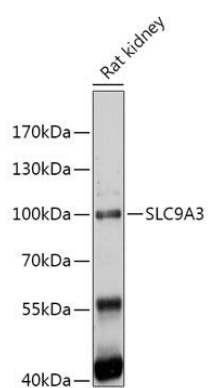
Recombinant fusion protein containing a sequence corresponding to amino acids 460-600 of human SLC9A3 (NP\_004165.2).

### Storage:

Store at -20°C. Avoid freeze / thaw cycles. Buffer: PBS with 0.02% sodium azide, 50% glycerol, pH7.3.

## Product Images

---



Western blot - SLC9A3 Polyclonal Antibody (CAB17532)