

SIGLEC1 Rabbit Polyclonal Antibody



CAB17533

Product Information

Size:

20uL, 50uL, 100uL, 200uL

Observed MW:

200kDa

Calculated MW:

200kDa

Applications:

WB

Reactivity:

Human

Protein Background

This gene encodes a member of the immunoglobulin superfamily. The encoded protein is a lectin-like adhesion molecule that binds glycoconjugate ligands on cell surfaces in a sialic acid-dependent manner. It is a type I transmembrane protein expressed only by a subpopulation of macrophages and is involved in mediating cell-cell interactions. Alternative splicing produces a transcript variant encoding an isoform that is soluble rather than membrane-bound; however, the full-length nature of this variant has not been determined.

Immunogen information

Gene ID:

6614

Uniprot

Q9BZZ2

Synonyms:

SN; CD169; SIGLEC-1; SIGLEC1

Antibody Information

Recommended dilutions:

WB 1:500 - 1:2000

Source:

Rabbit

Isotype:

IgG

Purification:

Affinity purification

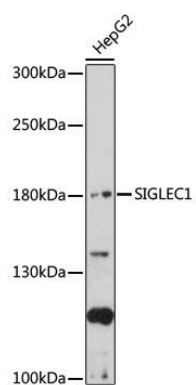
Immunogen:

Recombinant fusion protein containing a sequence corresponding to amino acids 50-300 of human SIGLEC1 (NP_075556.1).

Storage:

Store at -20°C. Avoid freeze / thaw cycles. Buffer: PBS with 0.02% sodium azide, 50% glycerol, pH7.3.

Product Images



Western blot - SIGLEC1 Polyclonal Antibody (CAB17533)