

SNTB1 Rabbit Polyclonal Antibody



CAB17534

Product Information

Size:

20uL, 50uL, 100uL, 200uL

Observed MW:

58kDa

Calculated MW:

Applications:

WB

Reactivity:

Mouse

Antibody Information

Recommended dilutions:

WB 1:500 - 1:2000

Source:

Rabbit

Isotype:

IgG

Purification:

Affinity purification

Protein Background

Dystrophin is a large, rod-like cytoskeletal protein found at the inner surface of muscle fibers. Dystrophin is missing in Duchenne Muscular Dystrophy patients and is present in reduced amounts in Becker Muscular Dystrophy patients. The protein encoded by this gene is a peripheral membrane protein found associated with dystrophin and dystrophin-related proteins. This gene is a member of the syntrophin gene family, which contains at least two other structurally-related genes. [provided by RefSeq, Jul 2008]

Immunogen information

Gene ID:

6641

Uniprot

Q13884

Synonyms:

59-DAP; A1B; BSYN2; DAPA1B; SNT2; SNT2B1; TIP-43; SNTB1

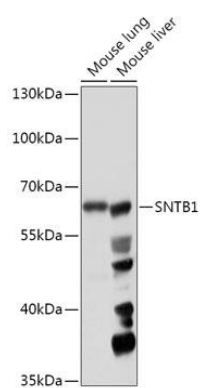
Immunogen:

Recombinant fusion protein containing a sequence corresponding to amino acids 1-110 of human SNTB1 (NP_066301.1).

Storage:

Store at -20°C. Avoid freeze / thaw cycles. Buffer: PBS with 0.02% sodium azide, 50% glycerol, pH7.3.

Product Images



Western blot - SNTB1 Polyclonal Antibody (CAB17534)