

SPRR1A Rabbit Polyclonal Antibody



CAB17535

Product Information

Size:

20uL, 50uL, 100uL, 200uL

Observed MW:

19kDa

Calculated MW:

Applications:

WB IF

Reactivity:

Human, Mouse, Rat

Antibody Information

Recommended dilutions:

WB 1:500 - 1:2000 IF 1:50 - 1:200

Source:

Rabbit

Isotype:

IgG

Purification:

Affinity purification

Protein Background

Immunogen information

Gene ID:

6698

Uniprot

P35321

Synonyms:

SPRK; SPRR1A

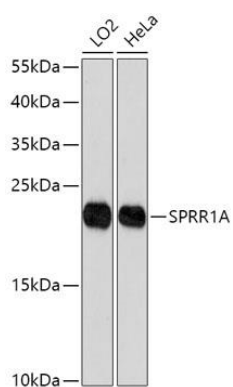
Immunogen:

A synthetic peptide of Human SPRR1A.

Storage:

Store at -20°C. Avoid freeze / thaw cycles. Buffer: PBS with 0.02% sodium azide, 50% glycerol, pH7.3.

Product Images



Western blot - SPRR1A Polyclonal Antibody (CAB17535)