

SRPK2 Rabbit Polyclonal Antibody



CAB17536

Product Information

Size:

20uL, 50uL, 100uL, 200uL

Observed MW:

120kDa

Calculated MW:

Applications:

WB IF

Reactivity:

Human, Mouse, Rat

Antibody Information

Recommended dilutions:

WB 1:500 - 1:2000 IF 1:50 - 1:200

Source:

Rabbit

Isotype:

IgG

Purification:

Affinity purification

Protein Background

Immunogen information

Gene ID:

6733

Uniprot

P78362

Synonyms:

SFRSK2; SRPK2

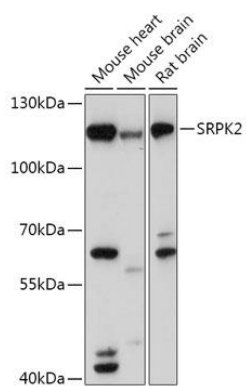
Immunogen:

Recombinant fusion protein containing a sequence corresponding to amino acids 420-520 of human SRPK2 (NP_872633.1).

Storage:

Store at -20°C. Avoid freeze / thaw cycles. Buffer: PBS with 0.02% sodium azide, 50% glycerol, pH7.3.

Product Images



Western blot - SRPK2 Polyclonal Antibody (CAB17536)